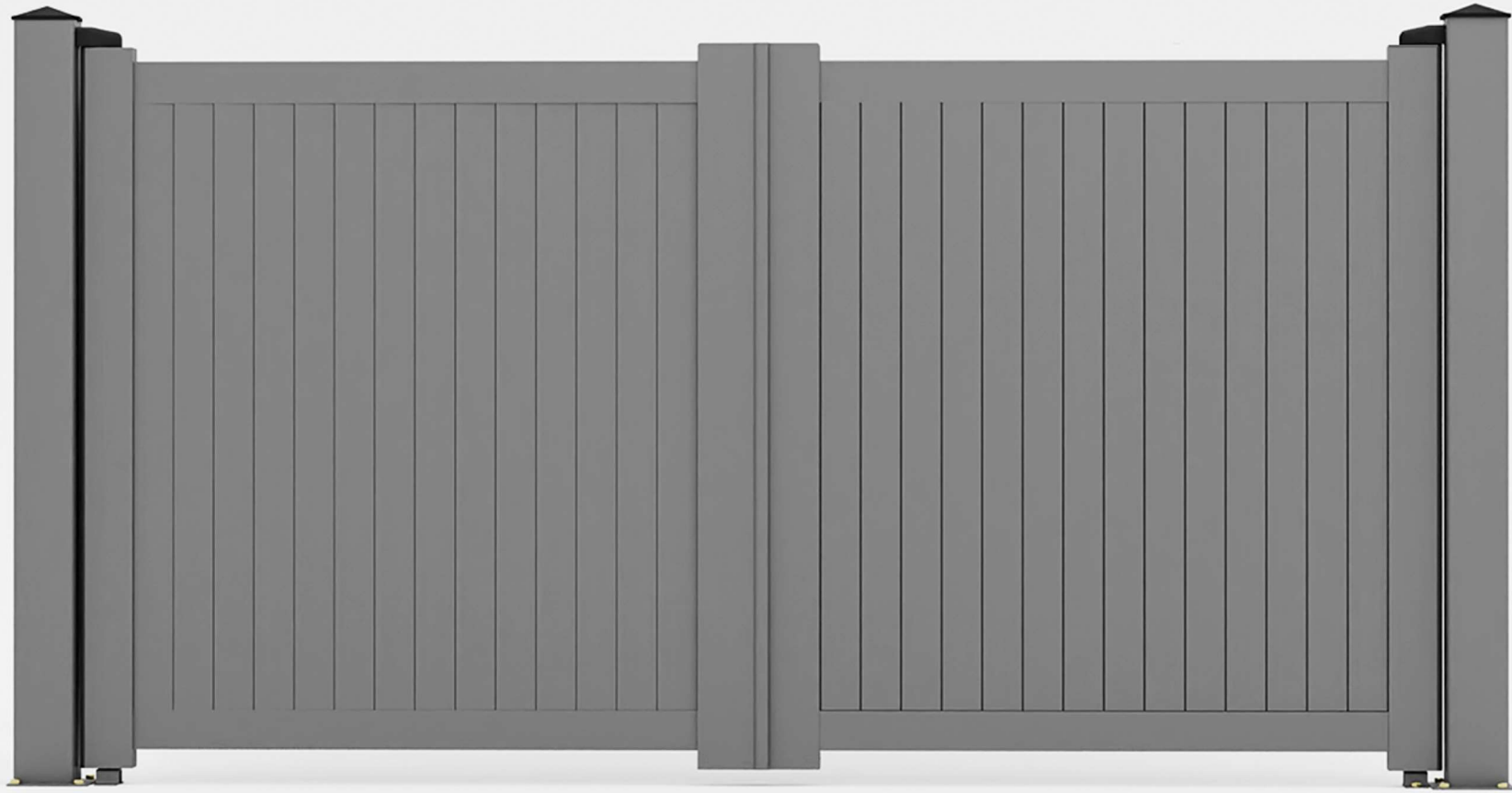
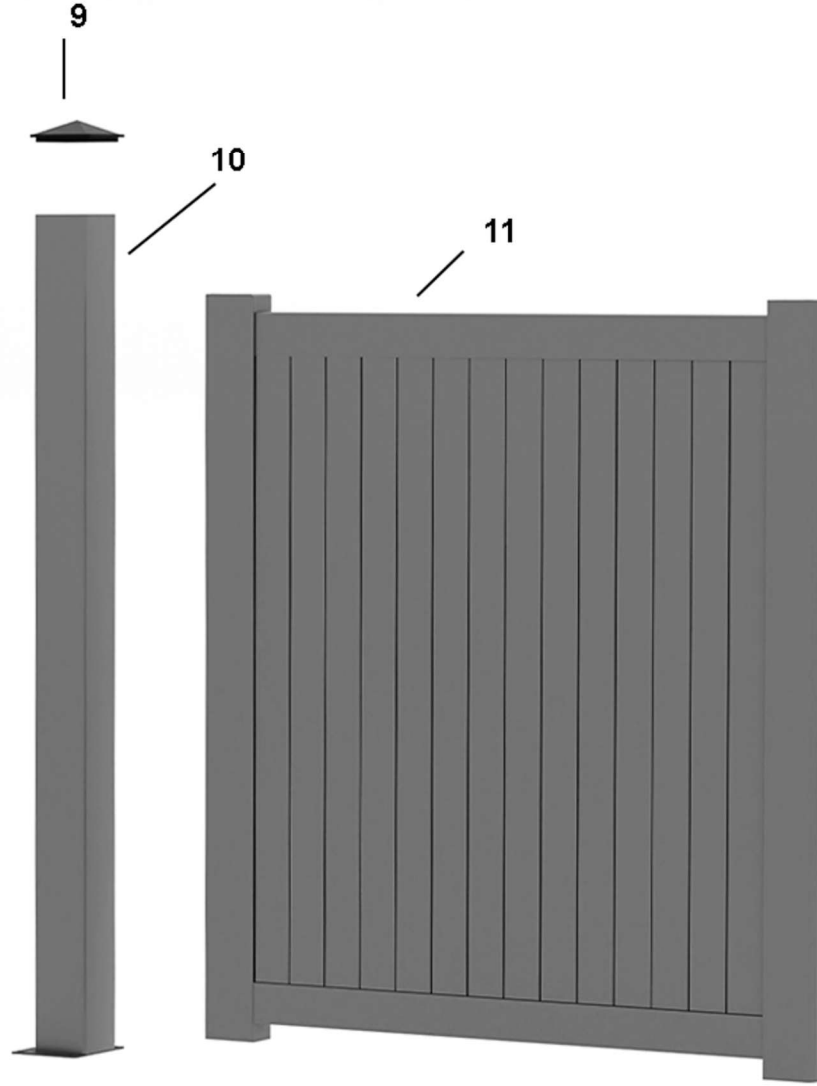
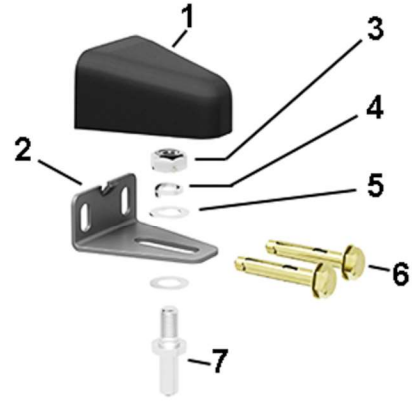


DOUBLE GATES - POST MOUNTED





	DESCRIPTION	QTY
1	HINGE COVER	4
2	HINGE BRACKET	4
3	M12 HINGE NUT	4
4	SPRING WASHER	4
5	M12 WASHER	4
6	ANCHOR BOLTS	16
7	HINGE SPIGOT	4
8	OPTIONAL FLOOR BRACKET	2
9	POST COVER CAPS	2
10	150mm POST	2
11	READY MADE DOUBLE GATE	2

1: MARK POSITION OF POSTS

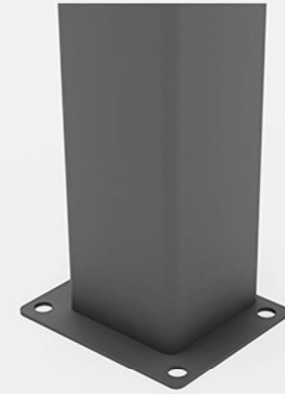


2: FLOOR OR CONCRETE MOUNT



**CONCRETE -
GO TO STEP 5**

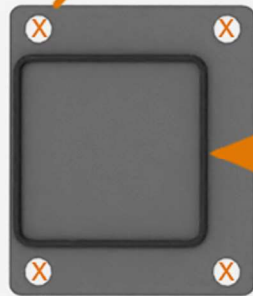
OR



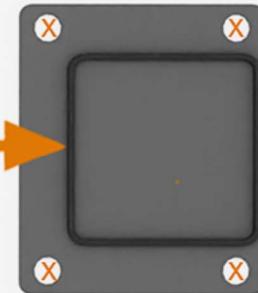
**FLOOR MOUNT -
GO TO STEP 3**

3: DRILL FLOOR BOLTS

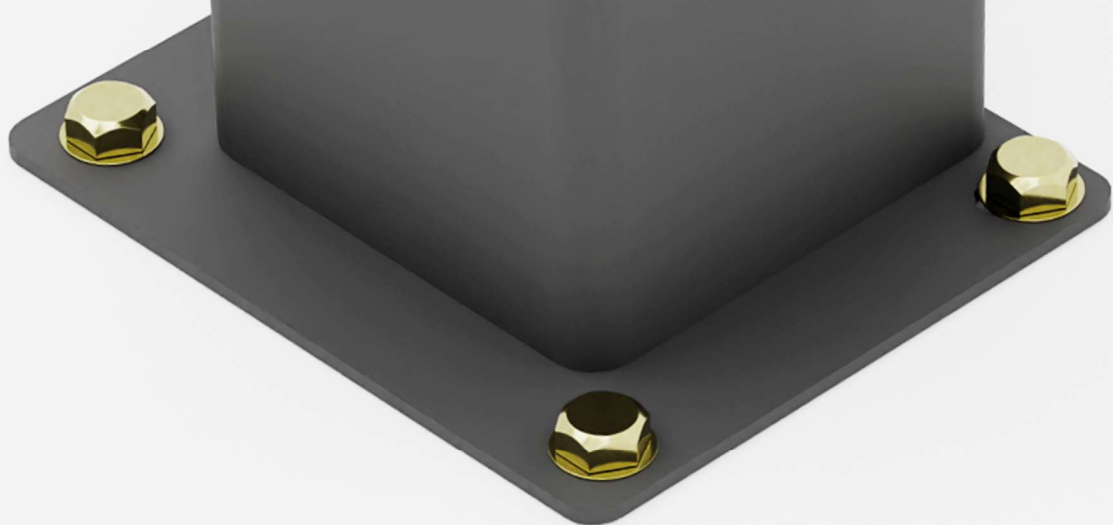
10MM DRILL - 8 PLACES



GATE WIDTH
30MM - 60MM



4: FIX TO FLOOR



GO TO STEP 8

NOTES

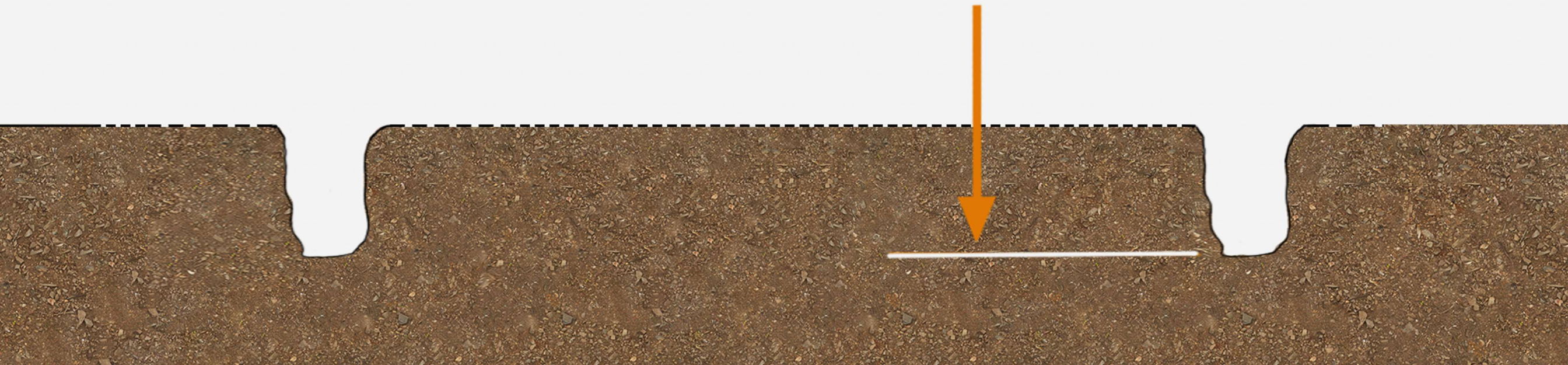
- M10 X 75MM BOLTS
- 8 X PLACES
- WRENCH OR SOCKET SET



***FOR CONCRETE MOUNT ONLY**

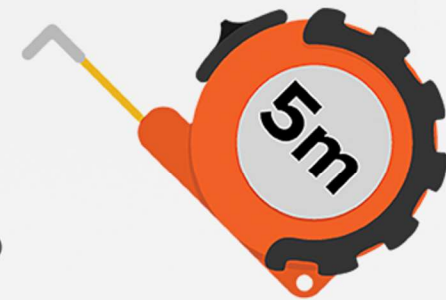
5: DIG POST HOLES

**DIG 2 x POST HOLES
MINIMUM 500MM
BELOW GROUND LEVEL**



6: CUT 2 X POSTS TO LENGTH

**GATE HEIGHT
+ 100MM FROM
GROUND LEVEL**



7: CONCRETE POSTS

← SET WIDTH BETWEEN POSTS
GATE WIDTH + 30MM - 60MM →

USE QUICKSET CONCRETE

ENSURE POSTS ARE
SQUARE IN BOTH AXIS



NOTES

- BRACKET TO POST
40MM MIN
60MM MAX
- DRILL 2 x PLACES
- 10MM DRILL



8: FLOOR SPIGGOT

POST CENTRE

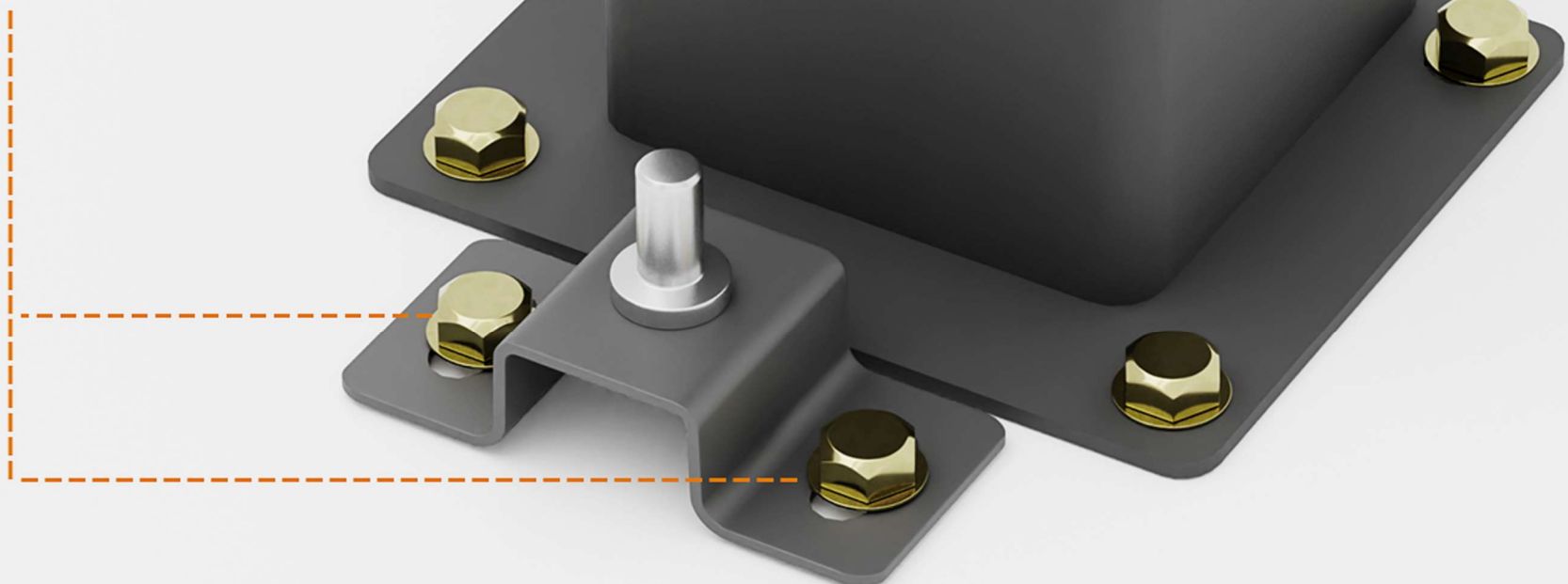
40MM - 60MM





9: PRE-ASSEMBLE LOWER SPIGGOT

**M10 BOLTS
2 x PLACES**



10: FIX LOWER HINGE TO FLOOR

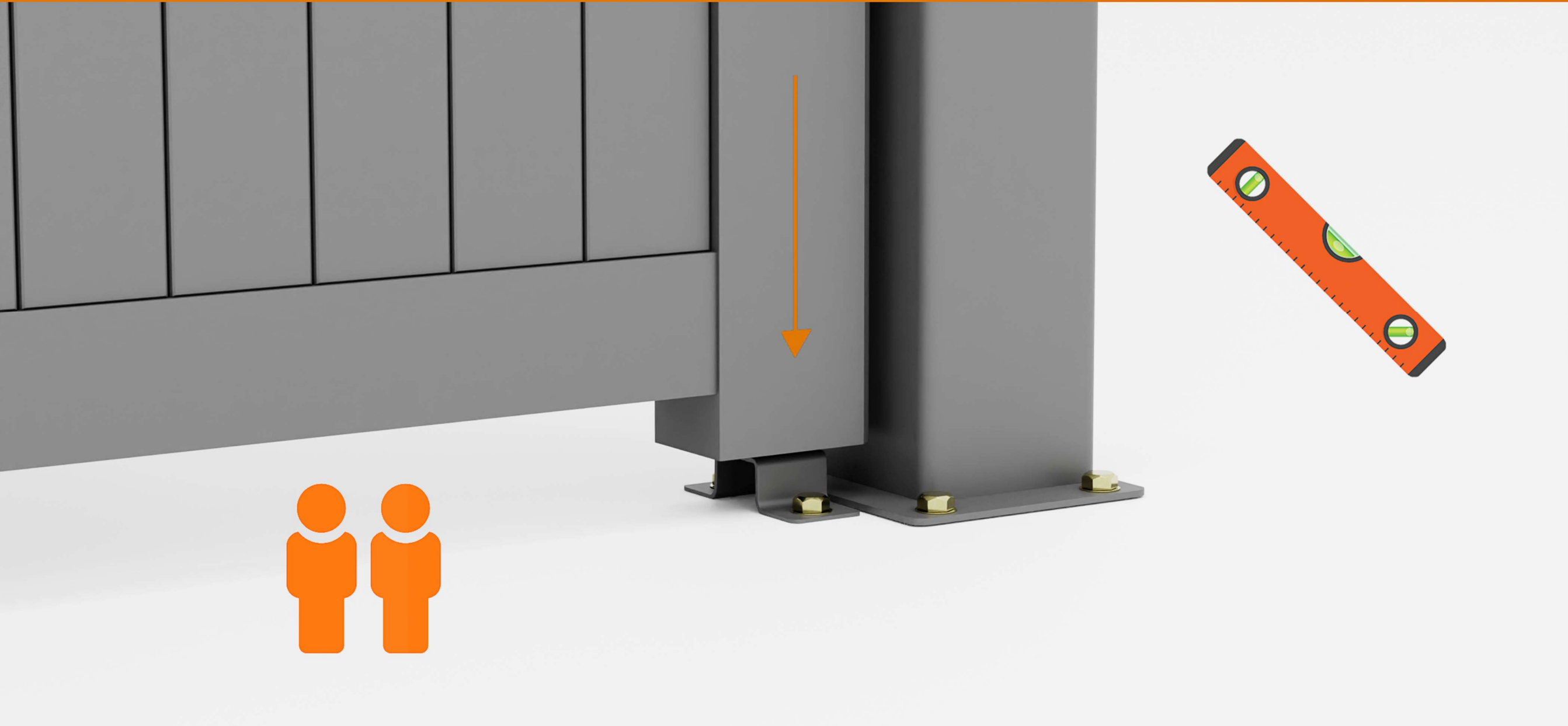
11: ASSEMBLE UPPER SPIGOT



NOTES

- OPPOSITE TO LOWER BRACKET

12: LOAD GATE - HOLD SQUARE



NOTES

- **HOLD GATE SQUARE**
- **LOAD UPPER HINGE**
- **MARK 2 X PLACES**



13: MARK UPPER HINGE POSITION

NOTES

- DRILL 2 x PLACES
- 12MM DRILL



13: DRILL POST

NOTES

- 2 x M12 x 35MM
- 2 x M12 NUTS
- 4 x WASHERS



14: FIX UPPER HINGE

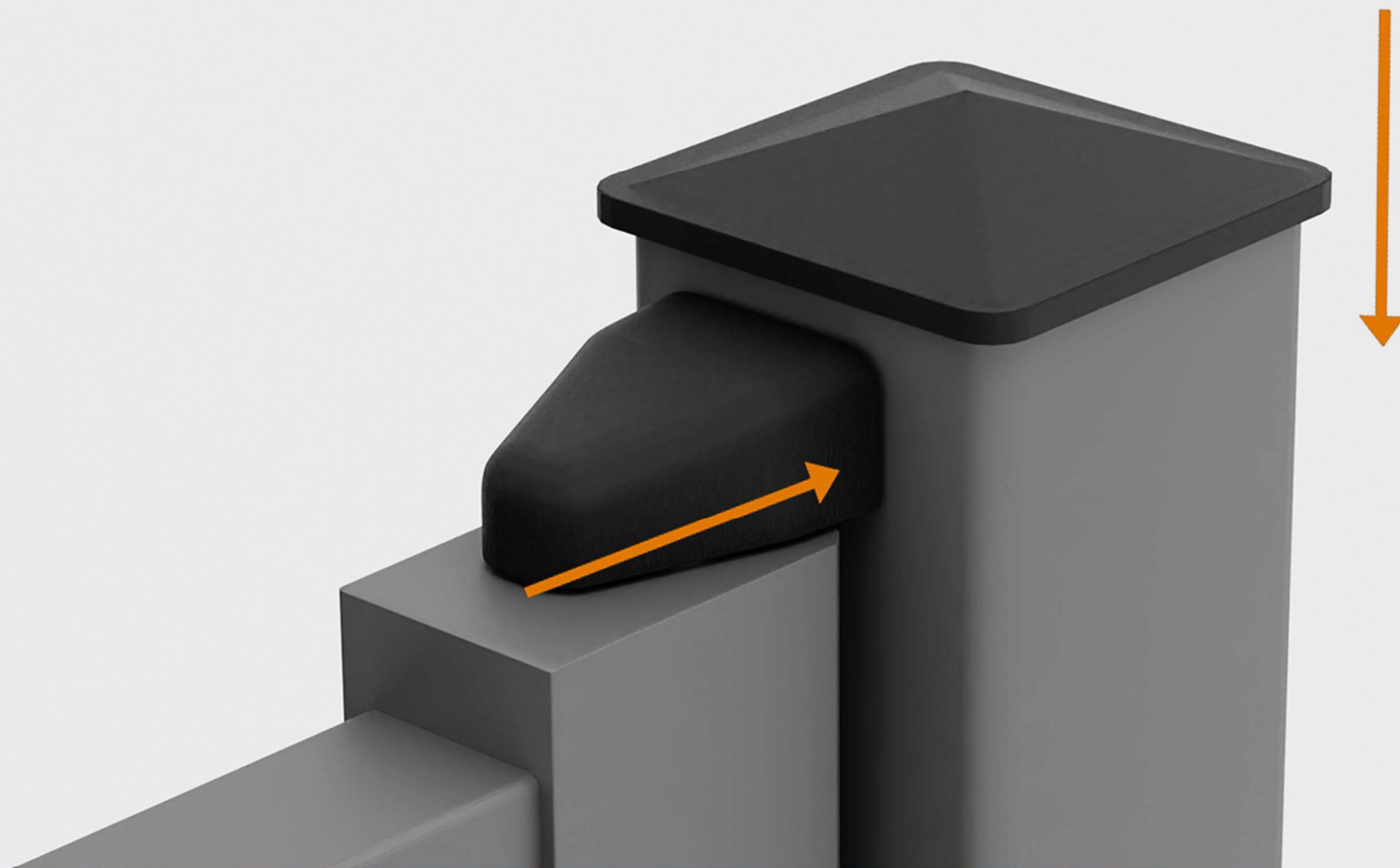
REPEAT
STEP 8 TO 15
FOR LH GATE



10MM GAP

17: ADJUST UPPER HINGES





18: FIT COVERS - 4 X PLACES

PROJECT COMPLETE

